

THE
BERKSHIRE
- RESIDENCES -

F A C T S H E E T

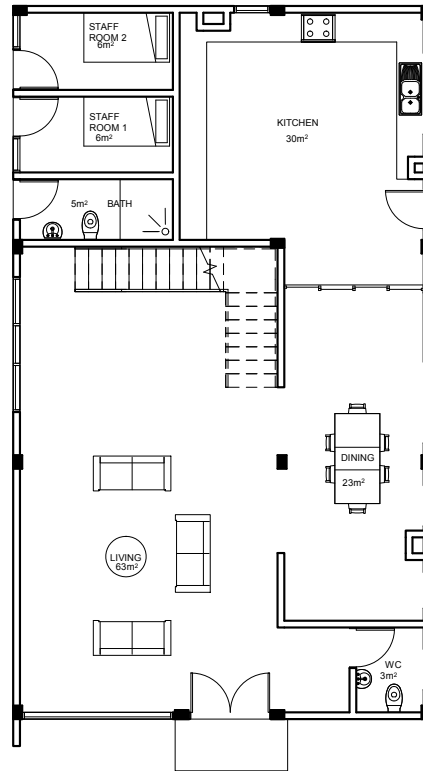




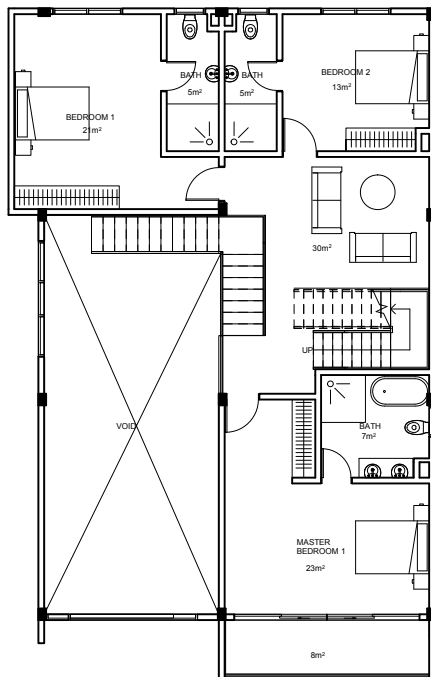
FLOOR PLAN

TOWN HOUSES

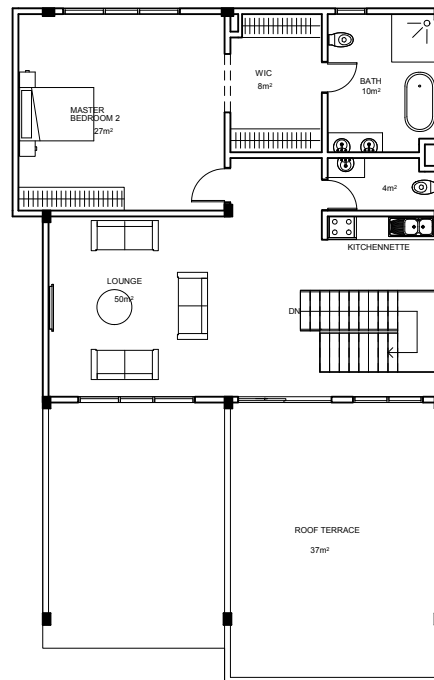
NO. OF UNITS - 4
 BEDROOMS - 4BR
 TOTAL AREA PER UNIT
460 sqm



FIRST FLOOR (FF)
130SQM



FIRST FLOOR (FF)
130SQM



FIRST FLOOR (FF)
130SQM

PROPERTY FEATURES

TOWNHOUSE



Individual Separate Entry



Pool and Lounging Area



Private Parking



Rooftop Terrace



Modern Italian Exquisite Furniture and Fixtures



24 Hour Security

TOWNHOUSES

Unit Type	A	B	C	D
Area	460 sqm	460 sqm	460 sqm	500 sqm
Pricing	\$1,200,000	\$1,200,000	\$1,200,000	\$1,250,000

PAYMENT PLANS AND DISCOUNT POLICY

INITIAL / RESERVATION FEE	10%	CASH PAYMENT PLANS	UPON REQUEST
DISCOUNT BASED ON PAYMENT STRUCTURE		PAYMENT DURATION	12 / 24 MONTHS
INTEREST RATE	4.5% PER ANNUM (IF FINANCING IS REQUIRED)	INSTALLMENT PAYMENT PLANS	UPON REQUEST

KEY LANDMARKS AND SOCIAL SITES

- Accra Mall: Popular shopping destination with various retail outlets, dining options, and entertainment facilities.
- Marina Mall: Major shopping center close to the airport with various shops and restaurants.
- Wild Gecko Handicrafts: Craft shop selling local art, furniture, and souvenirs.
- A&C Mall: Shopping center with retail stores, a gym, and eateries.
- University of Ghana: Prominent educational institution in Ghana.
- Lincoln International School: Renowned educational institution offering international curricula.
- FitTrip Gym: State-of-the-art fitness center nearby.
- Peter Pan Restaurant: Popular dining spot known for local and continental dishes.
- Golden Tulip Hotel: 4-star hotel with accommodation, dining, and event facilities.

DISTANCES TO ESSENTIAL SERVICES

- Kotoka International Airport: Approximately 4.5 kilometers (about 10 minutes drive).
- 37 Military Hospital: Around 5 kilometers (approximately 10-15 minutes drive).
- Nyaho Medical Centre: Private hospital about 3 kilometers from Dzorwulu (approximately 5-10 minutes drive).
- Ghana-Canada Medical Centre: Healthcare facility about 4 kilometers away (approximately 10 minutes drive).
- Police Hospital: About 6 kilometers away (approximately 15 minutes drive).

